

Object Identification and Labelling

Labelling in Traffic and Transport

**Ambulance vehicles**

Manufacturer of ambulance vehicles WAS developed RFID equipment check

**Solution**

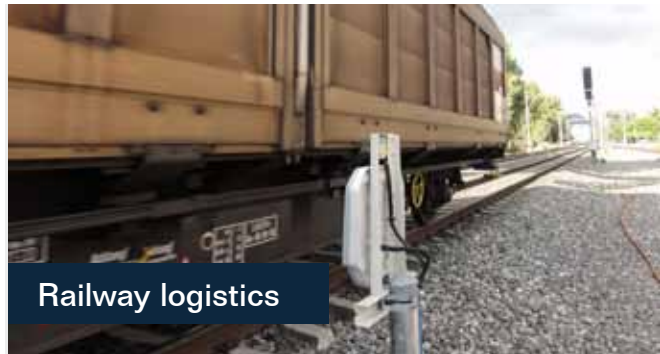
Emergency backpacks, zarges boxes, consumables, medical devices – all equipment on board of an ambulance vehicle must be checked for completeness. This means a high effort of time for emergency services. Therefore, in cooperation with the HLI, the manufacturer of special- and ambulance vehicles WAS – Wietmarscher Ambulanz und Sonderfahrzeugbau – developed a mobile and standalone solution to check the equipment of emergency vehicles.

**Technology Key Data**

Within a few minutes, all equipment assets tagged with UHF-RFID-labels can be identified with a handheld to check their expiry dates, maintenance intervals, and their correct allocation. The free-configurable stand-alone solution with integrated WIFI compares current status of the items in the vehicle with the target status and saves the equipment status onto the reader. Furthermore, the system supports the consumable good control for vehicles designed for civil protection.

**Benefits**

The time necessary for the daily check for completeness is reduced drastically. Confusions are ruled out and the fleet manager now knows every time, whether the correct device is in the right vehicle. Using the electronic documentation, emergency services always have an overview regarding due inspections (metrological control, safety related checks, or expiry date) and gain legal certainty.

**Railway logistics**

Greek Railway Company tracks 4,000 train carriages in the national railway systems

**Solution**

TrainOSE, a former subsidiary of the Hellenic Railways Organisation (OSE), is the Greek national railway operator, managing passenger and freight trains running on OSE rail infrastructure. TrainOSE employs all train crews/operators and manages all rail services throughout the Greek railway network, leasing rolling-stock owned by OSE.

**Technology Key Data**

In order to keep track of domestic and international rolling-stock from border stations throughout the railway network in real time a UHF RFID system is used for tracking 4.000 wagons. A nationwide grid of robust Kathrein RFID readers was installed at critical intersections along the railway track. Cargo railcars are tagged for asset management.

**Benefits**

The RFID readers work perfectly, even operating in a hot climate and tags moving at high speeds, so that every individual rail-wagon can be identified to ensure transparency within the entire route of the national railway network. The operator (TrainOSE) uses the real-time data for optimised logistics and operations planning and for providing value added services to freight-traffic customers.