

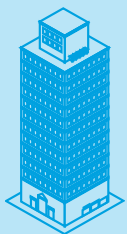


Salher®

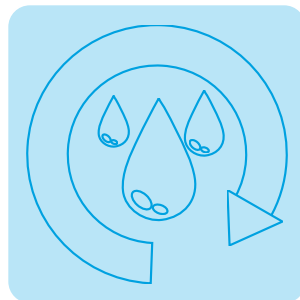
Water Solutions Worldwide



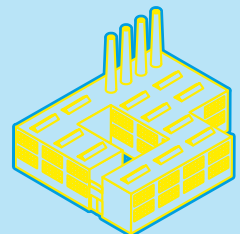
COMPACT PURIFICATION PLANTS



Urban
Water



Reuse and
Drinking Water



Industrial
Water

CUSTOM-MADE, QUICK AND FUNCTIONAL SOLUTIONS

Salher I+D+i and Technical Departments design modular water purification plants (WPP) for contaminated surface, underground, brackish water or seawater, according to flow rate, characteristics of the water and WHO regulation and EU standards.

We provide solutions which always **focus on the needs and requirements of the project**.

FUNCTIONAL SOLUTION

With its autonomous operation, Salher® WPPs provide drinking water to populations:

- in immediate emergency situations,
- in continuous emergency situations,
- small and medium for continuous supply (capacity up to 100 m³/h).

Our WPPs have the treatment capacity flow for any **industry** with quality water needs for its production processes.



TRANSPORT

Shipment of the modules in container or standard truck.

INSTALLATION AND COMMISSIONING

Modular plants do not require civil engineering and integrate several treatment phases in one unit, inside a low-surface area.

Found in standard container or platform.

For emergency situations, portable and flexible tanks for drinking water storage are available (optional). Autonomous WPP operation with generator or renewable energies.

WPP Salher ® are delivered mounted; lead times and commissioning are reduced. Drinking water is available within a few days.

CONTROL

Fully automatic with reliable control elements.

MANUFACTURING SYSTEM

All equipment is manufactured with corrosion-resistant material. Warranty and technical assistance.



ECONOMICAL SOLUTION

Salher designs equipment according to the type of water to treat. Our solutions are custom-made and meet the client requirements to reduce the waste.

Operation and maintenance cost are low.



OUR RANGE OF EQUIPMENT AND PLANTS

💧 WPP Salher® with multilayer filtration technology.

Reliable treatment for medium quality surface water. Plants are composed of the following elements:

- High efficiency GFRP winding filters which use filtering media of silex anthracite sand, zeolite and active filter glass,
- Ring filters,
- Feeding systems,
- Water quality control system,
- Disinfection system through automatic chlorination, UV, ozone,
- Electrical panel board for control and command of treatment.



💧 WPP Salher® with combined filtration technology.

Range of combinable filters for specific additional treatment according to contaminating loads in water.

- Filtration through active carbon,
- Filtration through ion-exchanger resin (softener, nitrate removal),
- Iron removal filter.

💧 WPP Salher® with filtration technology and previous lamellar settling.

Reliable treatment for surface water with high turbidity. Plants are composed of the following elements:

- Filtration help though coagulant dosage, flocculants and pH correctors,
- Lamellar settling tank,
- Filtration through silex-anthracite sand (optional: zeolite or active filter glass).



💧 WPP Salher® with ultrafiltration technology.

These plants are composed of high efficiency vertical ultrafiltration modules with hydrophilic tubular membranes.

Remains an option as a high efficiency filtration technology for medium quality water >> Retention of particles larger than 0.01 µm.



OUR RANGE OF EQUIPMENT AND PLANTS

💧 WPP Salher® with reverse osmosis technology.

Treatment intended for desalination or demineralization of brackish water and seawater for human consumption and industry.

The reverse osmosis technology in industry is mainly used to obtain a maximum quality or ultrapure water for various industries activity (cosmetic, paper, carton, slaughterhouses, hospitals...),

- Microfiltration of 5 microns,
- Multistage high pressure pumps,
- Skid equipped with spiral wound membranes (PA/PS) in size of 2,5", 4" and 8",
- Automatic cleaning system –flushing– with permeates water,
- Chemical Cleaning –CIP– (recommended in long stops of the plant),
- Treated water disinfection system.



💧 Phase of remineralisation subsequent to the reverse osmosis process.

Water conditioning of permeate after a reverse osmosis treatment includes supply of minerals and pH adjustment.

Salher® WPPs are modular and can use a by-pass system so as not to impair their proper functioning during the maintenance period.



Salher Ibérica, S. L.
Carrera Toledana,33
28500 Arganda del Rey
Madrid · España
Tel. +34 918 700 015
Fax: +34 918 757 530
salher@salher.com



Salher Polska
Łubna 62, 05-532
Baniocza · Polska
Tel. +48 22 737 44 95
Fax: +48 22 737 24 97
polska@salher.com



Salher Guadalajara
C/ Guadalajara Jalisco nº 70
Polígono Industrial Henares
19180-Marchamalo
(Guadalajara)



Salher France
5, rue Isidore Vallex
31500 Toulouse (France)
Tel: +33 1 84 16 47 84
Cell: +33 6 62 57 16 49
france@salher.com



Salher Portugal
Zona Industrial de VAGOS
lotes 44-46
3840 Vagos-Aveiro Portugal
Tel. +351 234 795 821
Fax: +351 234 795 823
portugal@salher.com



Salher México S.A.c.v.
Abasolo 128
Col. del Carmen, Coyoacán
04100 México, D.F.
Tel. +00 52 55 3869 4630
mexico@salher.com

 **Salher®**
Water Solutions Worldwide



www.salher.com