

# IRRESISTIBLE BOATING



evoY





# UPGRADING TO ELECTRIC HAS NEVER BEEN EASIER



Evoy's high-output electric motor systems are powerful beyond all expectations with full torque from zero rpm. Be ready to turn heads on the water with this fantastic looking zero emission machine.

Discover which Evoy<sup>®</sup> suits you best.



evoy

# BREEZE 120+ HP OUTBOARD

## THE GAME CHANGER

The Evoy® Breeze 120+ HP outboard motor is the new standard. The continuous power is 120+ HP - usually significantly higher (depends on temperature and state of charge) - while peak power is at an impressive 185 HP. Robust design (IP66) for use in both fresh and seawater, with 2 heat exchangers.



120+ HP OUTBOARD MOTOR		
	Nominal	Peak
Torque	170 Nm	270 Nm
Power	90 kW/ 120 HP	137 kW/ 185 HP
RPM	4900 rpm	6000 rpm
Total weight	203,5 + 65 + 15 kg*	
Other	IP 66, Programmable, Liquid cooled	

\*Motor + cables & accs + cooling liquids. Complete system weight excl. batteries & propeller, is approx. 283,5 kg. Above weights are indicative weight for a basic system and actual weight will vary depending on the configuration of the installation.

ENERGY BATTERIES	
Discharge/charge	Cont. 2C/1C Peak 4C/2C
Voltage (nominal)	365 VDC
Weight	380 + 20 kg*
Energy (total/usable)	63 kWh/56 kWh
Dimensions	(L) 1.111 mm (W) 795 mm (H) 351 mm
Other	IP 67, CE & DNV Certified, Liquid cooled

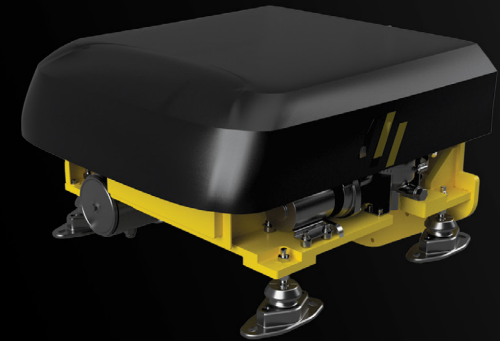
\*Approximate dry weight of battery plus cooling liquid.

evoy

# BREEZE 120+ HP INBOARD

## BEYOND EXPECTATIONS

Evoy's® turnkey inboard electric Breeze system is a robust system designed for 1000+ hours per year. With advanced over-the-air capabilities, enabling updates of the software onboard and troubleshooting without having to get your boat to the workshop. Our system is CE approved and IP66. The robust system design enables long operational lifespan. Motor system can be integrated towards sterndrive, water jet or shaft (optionally with gear for lower RPM and higher torque).



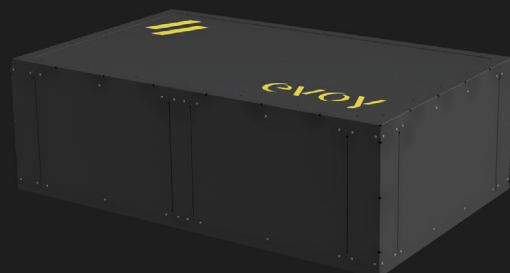
120+ HP INBOARD MOTOR		
	Nominal	Peak
Torque	170 Nm	270 Nm
Power	90 kW/ 120 HP	137 kW/ 185 HP
RPM	4900 rpm	6000 rpm
Total weight	Approx. 90 + 65 + 15 kg* 600 x 700 x 700mm	
Other	IP 66, Programmable, Liquid cooled	

\*Motor + cables & accs + cooling liquids. Complete system weight excl. batteries, is approx. 170 kg. Above weights are indicative weight for a basic system and actual weight will vary depending on the configuration of the installation.

ENERGY BATTERIES	
Discharge/charge	Cont. 2C/1C Peak 4C/2C
Voltage (nominal)	365 V
Weight	380 + 20 kg*
Energy (total/usable)	63 kWh/56 kWh
Dimensions	(L) 1.111 mm (W) 795 mm (H) 351 mm
Other	IP 67, CE & DNV Certified, Liquid cooled

\*Approximate dry weight of battery plus cooling liquid.

## Evoy's® Breeze batteries offer high discharge rates — crucial for electric power systems



Our fully integrated unique liquid cooling system can withstand heavy use. The battery modules are designed for 3.000 charging cycles with 70% DOD. Breeze is delivered with a 63 kWh battery pack as standard, upgradeable to more batteries if required.

## CHARGING/SUPERCHARGERS

The Breeze motor system has a 6 kW AC charger as standard. The Hurricane and Storm system has 20kW AC as standard. Options to upgrade to extra chargers to 20 or 40 kW AC capacity for faster charging on normal outlets or wall boxes. Our systems are fully compatible and included with DC charging (also called Supercharging) enabling up to 200 kW supercharging, however limited to 1C continuously.

## INSTALLATION

The inboard motor system is pre-assembled on skids for easy installation including plug-and-play wire harnesses and can be retrofitted in an existing hull or as part of a newbuild. The Breeze system fit in boats from 15 to 25 ft for single or in slow displacement boats from 20 to 50 ft. The Hurricane system fits in boats from 25 to 35 ft for single installation and 30 to 50 ft for triple installation.

## RANGE

Range is highly dependent on speed and boat weight and design. A typical traditional V-shaped hull boat will have around 1 hour range in plane hull speed, i.e. 20 nm in 20 knots. In speeds below hull speed, i.e. 5 knots, typically range is 12 hours (60 nm) for planing hull boats. With foils or special low weights, considerable longer ranges can be achieved.

evoy

# STORM 300+ HP OUTBOARD

## A NEW ERA IN MARITIME HISTORY

The Evoy™ Storm outboard motor is the new standard. The continuous power is equivalent at 300 HP while peak power is significantly higher for ease of bringing a boat to plane as an example, making sure there is always abundant power. Robust design (IP66) for use in both fresh and saltwater. The management system part of our E-Brain™ enables over-the-air-updates, reducing the cost of maintenance and down time while offering a significantly prolonged lifetime compared to a conventional system.



300+ HP OUTBOARD MOTOR		
	Nominal	Peak
Torque	550 Nm	Est. XXX Nm**
Power	222 kW/ 300 HP	XXX kW/ XXX HP**
RPM	4200 rpm	6000 rpm
Total weight	Approx. 270 + 80 + 15 kg*	
Other	IP 66, Programmable, Liquid cooled	

\*Motor + cables & accs + cooling liquids. Complete system weight excl. batteries & propeller, is approx. 365 kg. Above weights are indicative weight for a basic system and actual weight will vary depending on the configuration of the installation. \*\*Remains to be fully tested and verified.

ENERGY BATTERIES	
Discharge/charge	Cont. 2C/1C Peak 4C/-
Voltage (nominal)	365 VDC x 2 = 730 V
Weight	380 + 20 kg*
Energy (total/usable)	126 kWh/112 kWh
Dimensions	(L) 1111 mm (W) 795 mm (H) 351 mm
Other	IP 67, CE & DNV Certified, Liquid cooled

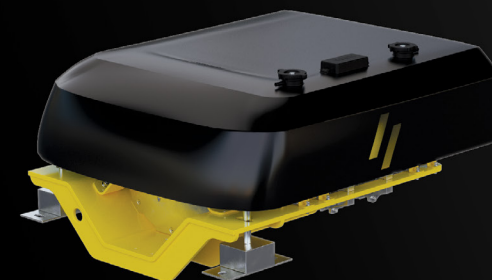
\*Approximate dry weight of battery plus cooling liquid.  
Min. 2 batteries per Storm outboard system.

evoy

# HURRICANE 400+ HP INBOARD

## THE NEW STANDARD

Evoy™s turnkey inboard electric system is a robust system designed for 1000+ hours per year. With advanced over-the-air capabilities, enabling updates of the software onboard and troubleshooting without having to get your boat to the workshop. Our system is CE approved and IP66. The robust system designs enable long operational lifespan.

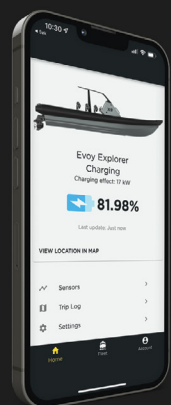


400+ HP INBOARD MOTOR		
	Nominal	Peak
Torque	770 Nm	1500 Nm
Power	300 kW/ 400 HP	600 kW/ 800 HP
RPM	3750 rpm	6000 rpm
Total weight	290 + 95 + 15 kg* 600 x 700 x 700 mm	
Other	IP 66, Programmable, Liquid cooled	

\*Motor + cables & accs + cooling liquids. Complete system weight excl. batteries, is approx. 400 kg. Above weights are indicative weight for a basic system and actual weight will vary depending on the configuration of the installation.

ENERGY BATTERIES	
Discharge/charge	2C/1C
Voltage (nominal)	365 VDC x 2 = 730 V
Weight	380 + 20 kg*
Energy (total/usable)	126 kWh/112 kWh
Dimensions	(L) 1111 mm (W) 795 mm (H) 351 mm
Other	IP 67, CE Certified, Liquid cooled

\*Approximate dry weight of battery plus cooling liquid.  
Min. 2 batteries per Hurricane inboard system.



## Complete control right at the palm of your hand

Enjoy complete overview of your boat from the comfort of your couch. The Evoy control system is connected 24/7. This means that we can show you near real time information about your boat as well as put you in complete control from the palm of your hand.

- GPS
- Charging management
- Sensor readings
- Trip log
- Share boat access
- Multiple functions will be added in the future.

## AN E-VOLUTION FOR THE ELECTRIC BOAT MARKET

An easy to install, powerful motor that fits any kind of boat, including retrofits. It is not only the fastest electric motor available in the market but also the go-to solution as you are making the shift to sustainable boating.





evoy



[www.evoy.no](http://www.evoy.no)

The information contained herein is provided solely for the purpose of general explanation and is subject to modification without notice. No warranty or guarantee is given regarding the information contained herein or the referenced products. Please contact Evoy AS for the most current and relevant product information for your application. ©Evoy AS, registered trademark.