

4Sight2

Calibration and Asset Management Software

- 4Sight2 is the next generation calibration and asset management software that provides full visibility of all your assets, reference standards and resources on your plant
- Complete integration with Druck calibration equipment automates field activities & minimises manual intervention without compromising on quality, compliance and data integrity
- Automatic workload scheduling and planning, status tracking, configuration capabilities based on individual needs, track and trace calibrations, historical trending and drift analysis features provide a robust solution to drive process efficiency and time saving.
- Easy to use, simple layout packed with customisation capabilities offer highly flexible and adaptable solution suitable for a wide range of user groups such as technicians, site supervisors, managers spanning across single or multiple sites or geographies.
- Web browser-based design allows you to access data anytime, anywhere eliminating the need for maintaining and managing paper-based records.



Features

Asset and Test Equipment Management

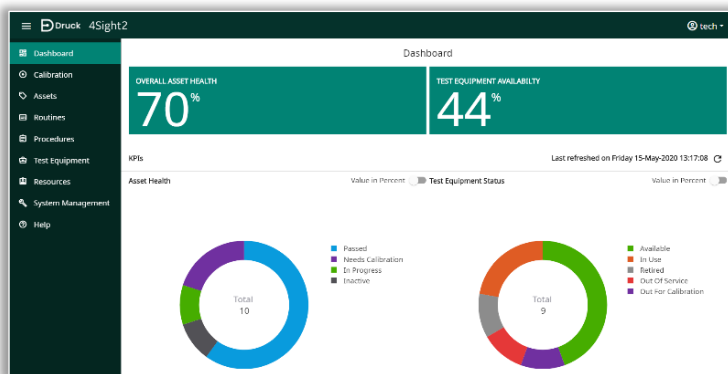
- Create comprehensive asset and test equipment database
- Create comprehensive factory hierarchy (Plant, Location, Tag, Device, Range)
- Hierarchical or tabular visualization of data
- Customisable data grids
- Export data to standard file formats
- Configuration policies

Calibration Management

- Automates calibration when Integrated with the latest Druck workshop or documenting portable pressure, temperature & electrical calibrators
- Manual entry of calibration data
- Uncertainty calculation for added industry standard compliance
- Easy access to calibration history
- Automatic calibration scheduling and workload management

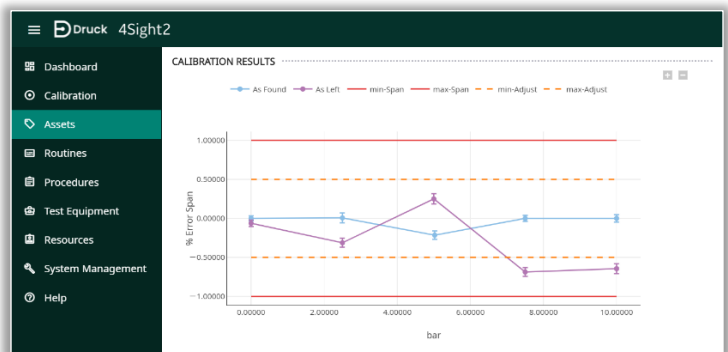
Reporting and analysis

- Customisation calibration certificate service
- Reverse trace report for tracing calibrations associated with a reference standard.
- Historical trending and drift analysis graph for interval analysis and predictive maintenance



- New **Improved look** and **Simplified Navigation**
- Improved Reference Standard **Status Tracking and management**
- **Automatic Calibration workload scheduling**
- Improved **Communications Engine**
- Quick and Easy **Express Installation**
- Integrated with Druck Temperature Calibrator DryTC165/650, LiquidTC165/650 and others

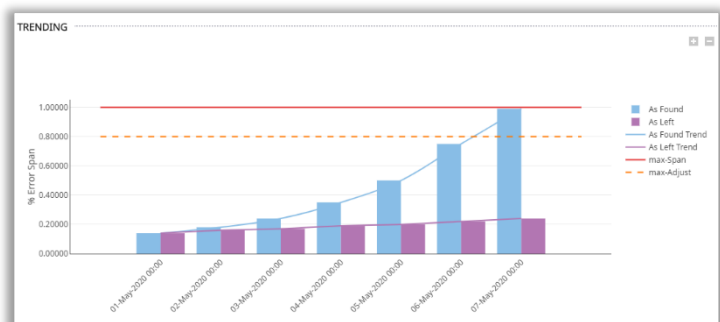
- **Uncertainty Calculation** provides additional confidence for calibration data in accordance with industry standards
- The **Traceability Report** enables speedy investigation of historical calibrations done with a reference standard thereby facilitating corrective actions.



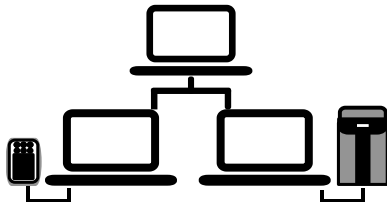
Equipment Name	Model	Manufacturer	Serial Number	Status	Cal Status	Calibration Due
DPH20G	F100	Druck	121345	In Use	On Time	30-Sep-2020
EGM01	Gas Bottle Nitrogen	EGM	123215	In Use	On Time	30-Nov-2020
DPH20G	DPH20G	Druck	3812185	Available	On Time	15-Sep-2020
PACE5000-CH	PACE5000	Druck	105049	Available	N/A	N/A
CM2-11G	PACE CM2-11G (CM2-B-11G)	Druck	425039	Available	Overdue	01-Sep-2017
DPH20G	DPH20G	Druck	5264861	Available	Overdue	30-Jan-2020
DPH20GCopy37	DPH20G	Druck	429457	Out Of Service	On Time	30-Sep-2020
DPH20GCopy38	DPH20G	Druck	254578	Out For Calibration	On Time	30-Sep-2020
DPH20GCopy39	DPH20G	Druck	636759	Retired	On Time	30-Sep-2020
PACE5000-CH	PACE5000	Druck	1014035	Available	N/A	N/A
CMO-07G	PACE CMO-07G (CMO-B-07G)	Druck	1214015	Available	On Time	15-May-2021
DPH20G	DPH20G	Druck	1364054	Available	On Time	14-May-2021
DryTC165	DryTC 165C	Druck	9471547	Available	On Time	15-May-2021

- **Custom View** feature provide the ability to show/hide, sort, re-order and filter tabular data based on your requirement. Once done, you can save the configuration and **Export** the data in standard file format.
- **Customisable Report Service** allows you to create bespoke looking certificates using our brand-new reports engine.
- **User Configurable Policies** allow you to customise key behaviours

- **Improved Visualisation and Data Representation** for better decision making
- **Historical Trending** of drift data for interval analysis and predictive decision making
- Improved **Paperless Experience** while in field.



Minimum System Requirements

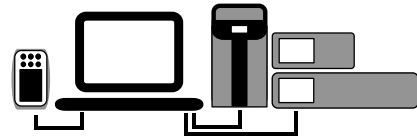


Applications Server

- Windows 10, Windows Server 2012 R2, Windows Server 2016, Windows Server 2019
- All Windows Updates fully installed
- Quad core processor
- 8GB or Greater (32GB Recommended)
- 1 TB disk space or greater

Client Workstation

- Windows 10, Windows Server 2012 R2, Windows Server 2016, Windows Server 2019
- Google Chrome V80+, Microsoft Edge V80, Firefox V74
- Adobe Acrobat Reader DC Version 2015.017.20050 +
- 8GB or Greater



Standalone PC/Installation

- Windows 10, Windows Server 2012 R2, Windows Server 2016, Windows Server 2019
- Google Chrome V80+, Microsoft Edge V80, Firefox V74
- Adobe Acrobat Reader DC Version 2015.017.20050 +
- 16GB or Greater (32 GB recommended)
- Dual Core Processor
- 500 GB or greater disk space

Get your copy of 4Sight2,



Download

1. Visit [4Sight2 Web Page](#)
2. Click **Download Free Trial**
3. Enter contact details
4. Click **Download**



Install

1. Extract package
2. Execute **4Sight2ExpressSetup.exe**



Start Using

**Launch desktop icon
and enjoy.!**

(For best results use
Google Chrome)

For installation queries and other technical support, contact us at, mstechsupport@bakerhughes.com

Flavours and Features

Features	Light	Standard	Advanced
Tags	1000	2000	Unlimited
Users	2	3	5
Manual Calibration	✓	✓	✓
Portable Calibration	✓	✓	✓
Automated Pressure Calibration (PACE)	-	Either	Both
Automated Temperature Calibration (Dry/LiquidTC)	-		
Customisable Data Grids	-	✓	✓
Customisable Calibration Certificate	✓ (1 template)	✓ (2 template)	✓ (5 template)
Customisable Policies	-	✓	✓
Trend Graph / Drift Graph	-	✓	✓
Drift Graph in Calibration Certificate	-	✓	✓
Reports	-	✓	✓
Uncertainty Calculation	-	✓	✓

Part Numbers

Part Numbers	Description
4SIGHT2-LIT	Light license, see above for full specifications
4SIGHT2-STD	Standard license, see above for full specifications
4SIGHT2-ADV	Advanced license, see above for full specifications
4SIGHT2-ADDT	Additional 1000 tags
4SIGHT2-ADDU	Additional ONE user license
4SIGHT2-DATA-MIG	Data migration (daily rate for application engineer)
4SIGHT2-REP-TEM	Additional ONE Customised Calibration Certificate
4SIGHT2-MAIN-ADHOC	Ad-hoc hourly maintenance (daily rate for application engineer)
4SIGHT2-TRAIN-STD	Standard Training Package (daily rate for application engineer)
4SIGHT2-TL-EXTRA	Travel & living expenses for on-site visits



Order Now

Request a quotation and state the quotation number when ordering.

Advise your requirements as follows:

1. Flavour Type [Lite / Standard / Advanced]
2. Any extra add-ons such as Trainings, Additional Users, Tags etc.

For more information please visit our website: druck.com, or contact your local Druck sales representative

Related Products

Process Calibrators

We offer a comprehensive range of portable pressure, temperature and electrical field calibrators. To help you select the right process calibration tools we have categorised our products into three ranges:

- The **Essential** range provides rugged, accurate and easy-to-use test and calibration tools.
- The **Expert** range introduces higher accuracy and more functionality
- The **Elite** range provides a modular system offering state-of-the-art multifunction communication and calibration



Laboratory and Workshop Instruments

Our PACE Series offers a comprehensive range of pressure controllers and indicators.

Our Dry/Liquid temperature calibrator range offers a high accuracy solution to temperature calibration measurement.



Pressure Transducers and Transmitters

We offer a wide range of pressure transducers and transmitters including analog, digital and HART/Smart devices. Please contact Druck for further information.

4Sight2 from Druck

Simple, scalable, and smart

**Calibration and asset management
software that works for you**



EMEA

sensing.grobycc@bakerhughes.com

Americas

CCpressureUSA@bakerhughes.com

Australia

custcare.au@bakerhughes.com

Rest of the World

sensing.grobycc@bakerhughes.com

Copyright 2020 Druck, Baker Hughes Business. This material contains one or more registered trademark of Baker Hughes Company and its subsidiaries in one or more countries. All third-party product and company names are trademarks of their respective holders.

920-556A

Baker Hughes 